

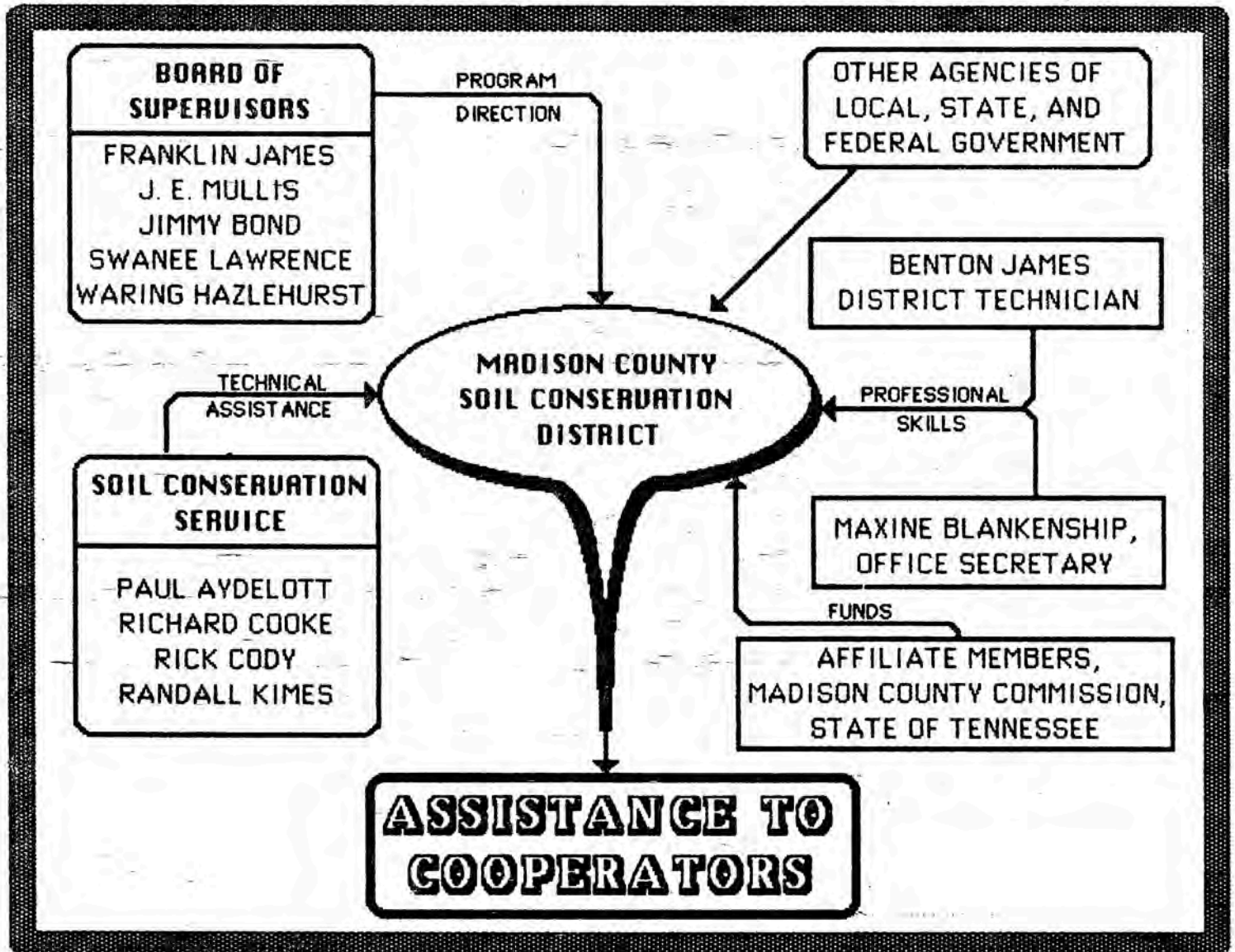


Madison County Soil Conservation District  
313 North Parkway  
Jackson, Tennessee 38305

# ANNUAL REPORT - 1984

Forty-three years ago the cooperative relationships shown below started in Madison County through the formation of the soil conservation district. Since then many farmers and other land users have been helped to plan the best use of their land and to install many of the needed conservation practices.

In 1984 about 400 farmers and other land users were assisted through the district's work. Cooperators with the district made plans to fully control erosion on 12,000 acres of land. The 150 cooperators that used conservation practices improved over 7,200 acres of cropland, and erosion was arrested on 5,000 acres.



FRANKLIN JAMES  
Chairman

J. E. MULLIS  
Vice-Chairman

SUPERVISORS  
JIMMY BOND  
Secretary-Treasurer

SWANEE LAWRENCE  
Member

WARING HAZLEHURST  
Member

While the thrust of the district's program is toward services to farmers, a number of programs are directed toward some long goals. Some programs benefit the long range interests of farmers; others are directed at the public in general.

One program of particular benefit has been the Chickasaw-Shiloh Resource Conservation and Development project. The project is directed by a council with members from eight southern West Tennessee Counties. The soil conservation district has been able to sponsor some special programs to help treat gullies, eroding cropland, and washed-out roadbanks.

In the Clover Creek Watershed in the southern part of the county, \$14,500 was obligated through cost-share agreements between the district and landowners as a result of the RC&D project funding. In excess of \$18,100 was used to treat critically eroding land based on previous cost-share agreements. The Soil Conservation Service provided funding for the RC&D program.

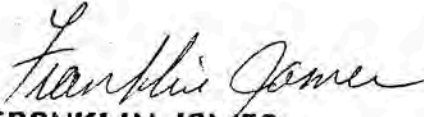
District leadership also enabled the planning of an additional watershed for critical area treatment like that in Clover Creek. The Big Black Creek drainage area between Denmark and Mercer was approved for future cost-share agreements.

Work also continued on other areas with critical erosion. Ten additional acres of badly washing roadbanks were shaped, fertilized, limed, seeded, and mulched this fall on Doak Mason Road. Like the cost-share funding in Clover Creek, the RC&D project paid 75% of the total cost of the critical erosion treatment.

Preliminary plans were made to treat severe gullies near Muse Park and Parkway School under similar RC&D project plans backed with the sponsorship of the soil conservation district.

Over the years, a number of district cooperators have gained attention for their extra efforts at saving their soil. Last year's Outstanding Conservation Farmer, Jimmy Tedford, was recognized as the Outstanding Conservation Farmer from Area 8 of the Tennessee Association of Conservation Districts. The district's Outstanding Conservation Farmer of 1984 was Neil Smith. Smith has gained much respect and admiration for his attention and respect to his land.

A number of other items were of value to the district's program in 1984. About 24 newspaper articles were published, 5 television programs were made, several classes were presented on conservation to local schools, and two demonstrations of no-till were used to encourage and educate farmers and others about the benefits of conservation tillage.

  
**FRANKLIN JAMES**  
**CHAIRMAN**